

Orchestra delivers an integrated operational control for projects, processes, tasks, cost and quality. Designed for professional service firms, organizations with internal IT services or departments, Orchestra increases corporate efficiency, improves project and service delivery, reduces costs, and enforces compliance with corporate standards and financial controls.



Through those main integrated modules, Orchestra gives you effective operational control on ongoing & future projects.

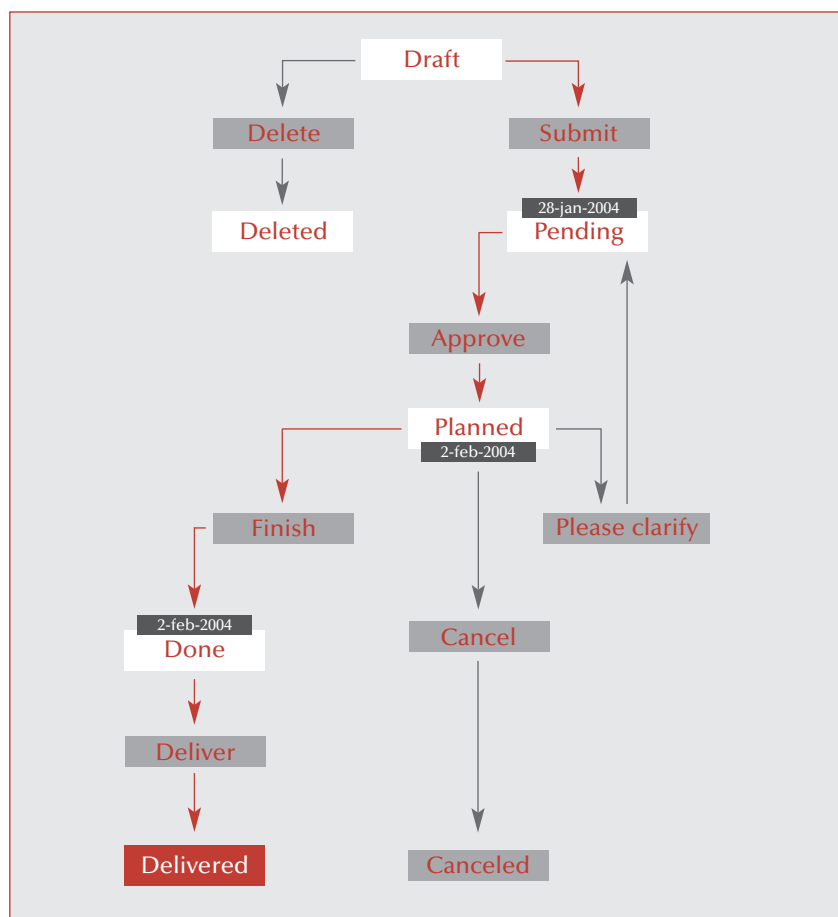
The main characteristics of Orchestra are :

- Web based
- Operational 24 h 7 days a week
- Fully collaborative
- Powerful search capabilities at any level
- Secured access
- Collecting any information : mails, office documents, ...

# I Do

Who is processing this request? What is my team doing? When is that task finished? How can I have full visibility on my working and tasking management functions?

Using "I Do", you can describe them through state-of-the-art workflows. Then your team and partners easily manage their open tasks and quickly report/react upon issues that may be blocking or postponing delivery. With its built-in powerful workflow templates, you instantaneously formalize simple as well as complex multi-orgs projects. With its unique integration of mail and office documents, "I Do" lets you distribute the activities and information in real-time and in a secured environment.

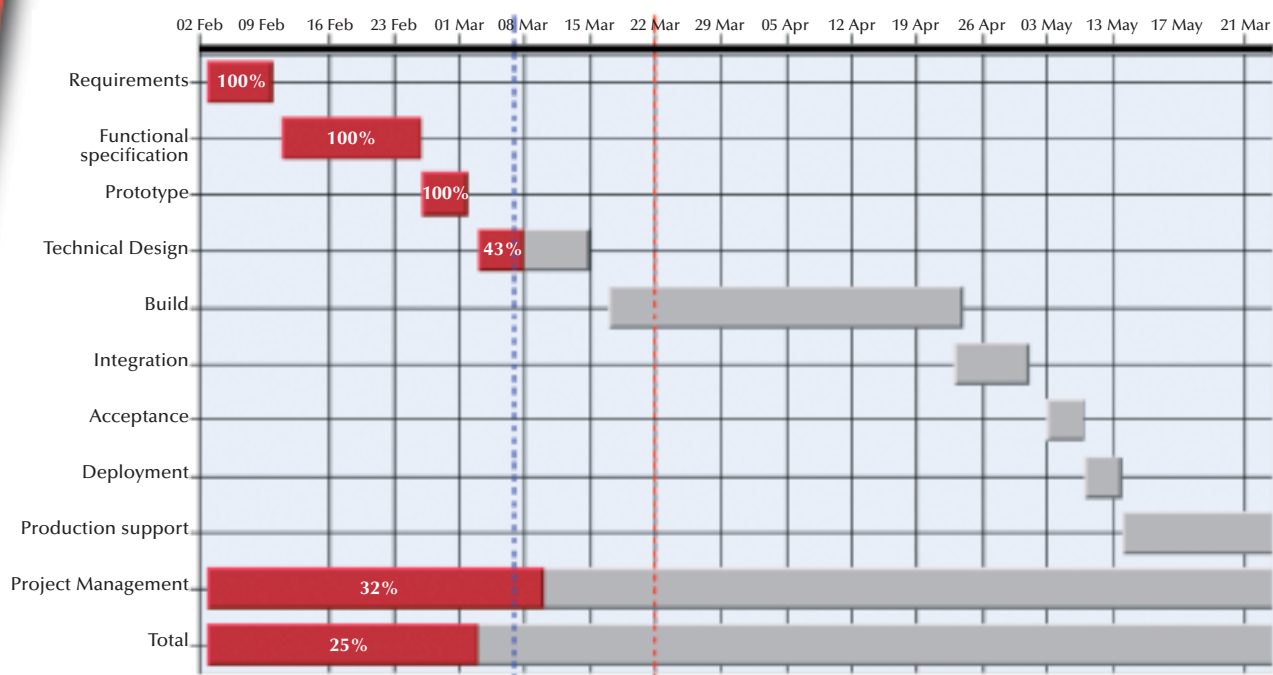


- Complex and simple processes
- Workflow maps
- Todo lists
- Trouble ticket collection
- Automated escalations
- Priority management
- Automated progress tracking
- Response time tracking

# I Pilot

Who is working on this project? What are the costs, and how much of the budget remains? Does my department have the capacity to take on a new project and finish it on time? So many questions, and all difficult to answer because they involve a large number of players from within your organization: project managers, resource managers, controlling managers...

The implementation of planning procedures, approval of times, and activity performance measures are far from simple, especially when you use separate tools that do not communicate. You manage a complex portfolio of activities and teams in a matrix structure simultaneously. Then "I Pilot" allows you to control the interactions between the activity schedules, the resource load plans and the budgets, in real time.



- Project planning
- Multi-projects: from Global Programs to micro-projects
- Budget follow-up
- MS-Project integration
- Automated progress tracking
- Controlled customer visibility
- Creation of working hypotheses
- Resource requests and project team creation
- Multi organization

# I Check

How to setup new project quality plans? How can I measure the amount of reworking? How to enhance test-reuse and non-regression testing?

“I Check” provides an enterprise level quality plan and test case management platform for controlling any activity or deliverable inside your company: software, documents and settings....

Using “I Check” you improve consistency, organization, and control throughout its test lifecycle:

#### Quality Plans:

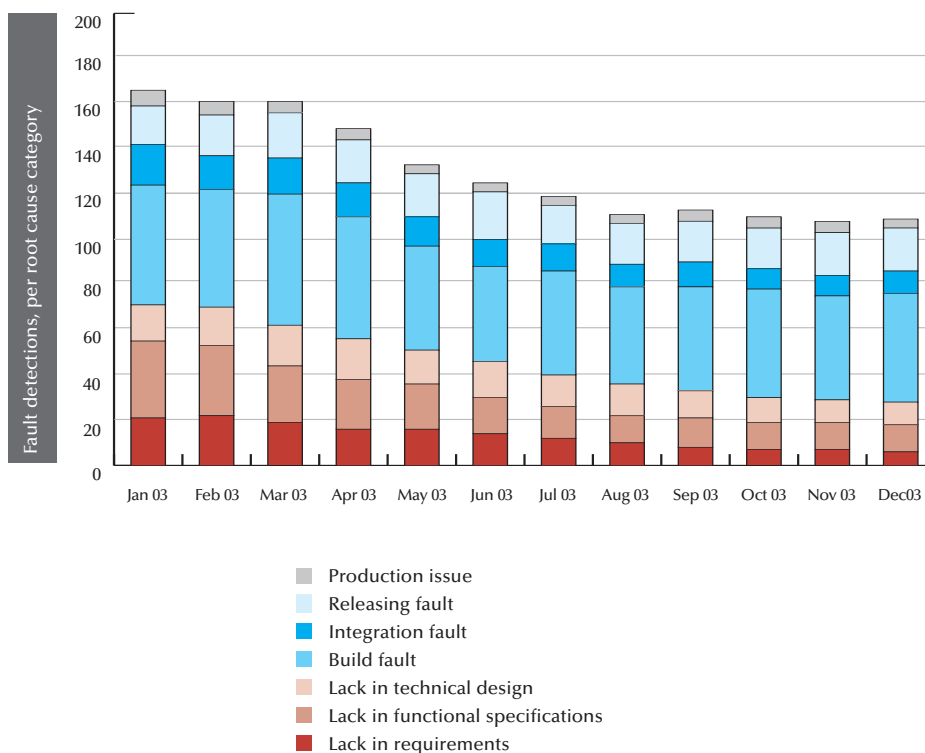
- Multi-level structure
- Quality profiles per deliverable / activity
- Dashboards

#### Test plans:

- Validation & compliance workflow
- Linkable to deliverables

#### Test execution:

- Single and multi-occurrence planning
- Reporting
- Failure & troubleshooting workflow



e-Val n.v./s.a.

Av. Wansartlaan 12

1180 Brussels - Belgium

Info desk: 32 2 332 45 40

Web: <http://www.e-val.be>

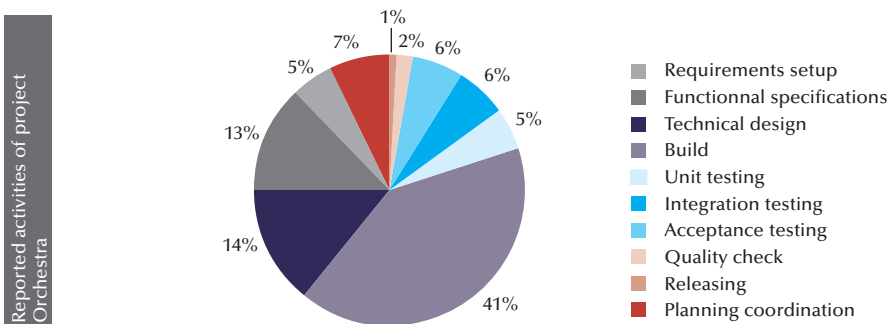
email: [infodesk@e-val.be](mailto:infodesk@e-val.be)



## My Time

How can I get detailed timesheets? What is the true effort spent on testing? What is the cost of user-acceptance? What are my new ratios per activity? Do I need to optimize my development cycle?

Through its unique association with the workflows of "I Do", "My Time" allows your team to complete pre-profiled timesheets. With this you easily measure the effort spent on each step of the development cycle.

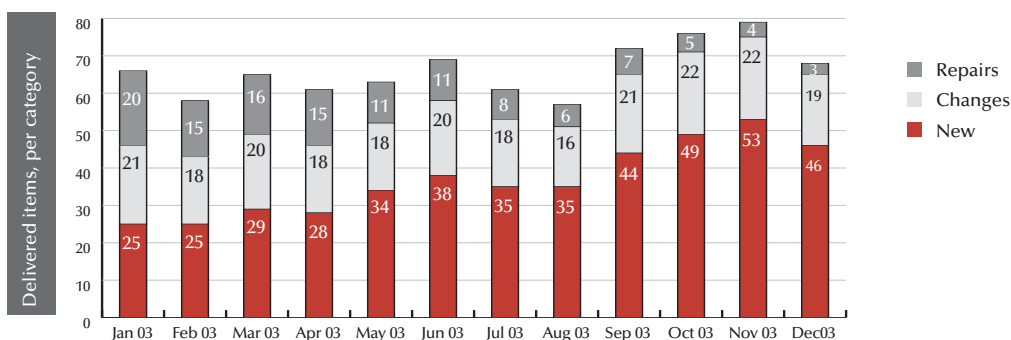


- Time reporting per detailed activity
- Automated timesheet pre-fill
- Approval process
- Automated feed of project done/remains
- Team availability
- Financial reports

## I Provide

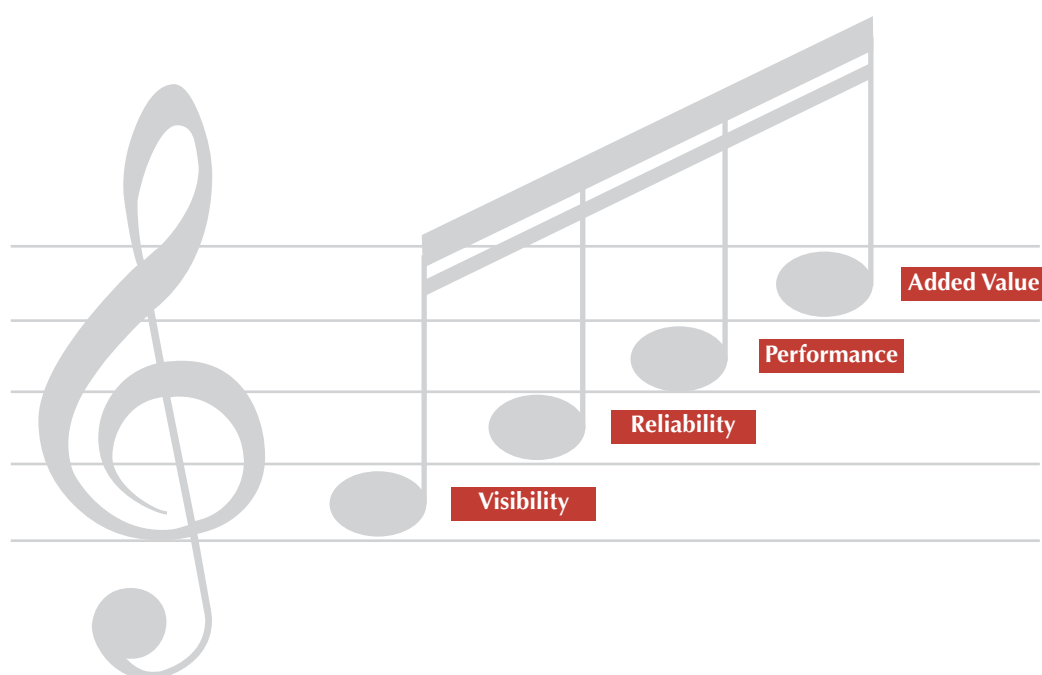
What are the true deliverables of this project? How many fixes did we make this month? Does my team really focus on new developments? How can we control and manage this huge amount of systems components? How much reworks of the same components?

When you are facing large applications, made of thousands of parts originating from different environments, "I Provide" gives you a powerful system of control!



- Delivery Staging/Baselining
- Automated feed from electronic repositories
- Version tracking
- Build history

In the fast changing Business World, your company will have to adapt efficiently to new service levels. The speed of change combined with the complexity of managing internal and external service partners will raise new management challenges. Orchestra insures an efficient and successful implementation in a four-step approach.



### Visibility

Upgrade your visibility with your team by showing:

- Issues as they occur
- Task/Project status and progress
- Who does what when

### Reliability

Increase your commitment towards your users/customers:

- Commit to delivery dates
- Detect delivery issues and problems
- Guided and repeatable processing

### Performance

Enhance your delivery performance:

- Key performance indicators, at any level
- Achievements vs. Targets trending

### Added Value

Mastering visibility, reliability and performance, you are in the best position to optimize and reengineer your activities to anticipate and match your organization's expectations.

e-Val n.v./s.a.

Av. Wansartlaan 12

1180 Brussels - Belgium

Info desk: 32 2 332 45 40

Web: <http://www.e-val.be>

email: [infodesk@e-val.be](mailto:infodesk@e-val.be)

